

### TYPES KK-A-U-S, KK-A-U-L

#### UNIVERSAL TERMINAL

Aluminum and Copper Conductors

Stacked Style - Type KK-A-U-S (figure 1)

Lay-In Style - Type KK-A-U-L (figure 2)

The Stacked Style configuration accommodate #2 AWG - 750 kcmil conductor. The stacked style is ideal for limited space applications. Up to 12 conductors can be accommodated, each port is range taking and the terminals accept aluminum and/or copper conductor. Mounting holes are NEMA-spaced with a 1/2" bolt hole.

The Lay-In Style configuration accomodate 1/0 AWG - 1000 kcmil conductor. The lay-in style makes cable insertion a breeze. Each size can accommodate up to 8 conductors. Mounting holes are NEMA-spaced with a 1/2" bolt hole.

#### Features & Benefits

- Fabricated from 6061-T6 aluminum alloy for conductivity and strength
- Clear plated for low-contact resistance
- For use with both copper and aluminum conductor
- Stacked configurations are ideal in limited space applications
- Lay-In configurations offer ease of conductor insertion



Fig. 1

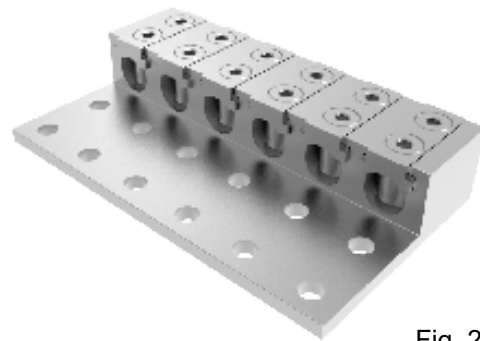


Fig. 2

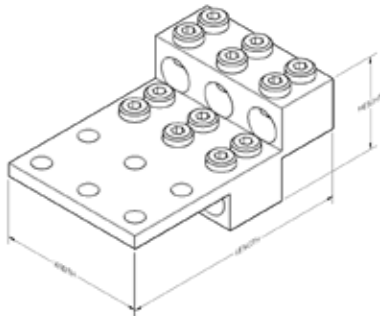


Fig 1 Line Art

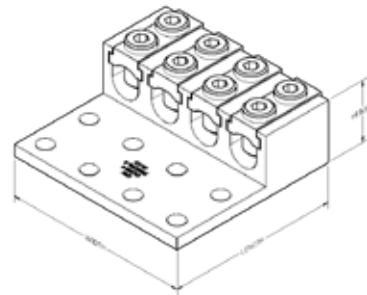


Fig 2 Line Art

| Catalog Number | Fig. # | # of Conductors | # of Mounting Holes | Wire Range (Aluminum or Copper) | Stud Hole Size | Hole Spacing | Length | Width | Height | Rec. Installation Torque (in-lbs)   |
|----------------|--------|-----------------|---------------------|---------------------------------|----------------|--------------|--------|-------|--------|---|
| Stacked Style  |        |                 |                     |                                 |                |              |        |       |        | #2 - 750 @ 180-240<br><br>4/0 - 350 @ 275-450<br><br>400 - 1000 @ 475-550 |
| KK6A39U6SNP    | 1      | 6               | 6                   | #2 AWG - 750 kcmil              | 1/2"           | 1.75"        | 7.50   | 4.75  | 3.00   |   |
| KK8A39U8SNP    |        | 8               | 8                   |                                 |                |              | 7.50   | 6.50  | 3.00   |   |
| KK12A39U10SNP  |        | 12              | 10                  |                                 |                |              | 7.50   | 8.25  | 3.00   |   |
| Lay-In Style   |        |                 |                     |                                 |                |              |        |       |        |   |
| KK4A39U8LNP    | 2      | 4               | 8                   | #2 AWG - 750 kcmil              | 1/2"           | 1.75"        | 6.00   | 6.50  | 2.20   |   |
| KK6A39U12LNP   |        | 6               | 12                  |                                 |                |              | 6.00   | 10.25 | 2.20   |   |
| KK8A39U16LNP   |        | 8               | 16                  |                                 |                |              | 6.00   | 13.50 | 2.20   |   |
| KK4A44U8LNP    | 2      | 4               | 8                   | 1/0 AWG - 1000 kcmil            | 1/2"           | 1.75"        | 6.00   | 6.75  | 2.20   |   |
| KK6A44U12LNP   |        | 6               | 12                  |                                 |                |              | 6.00   | 10.25 | 2.20   |   |
| KK8A44U16LNP   |        | 8               | 16                  |                                 |                |              | 6.00   | 13.50 | 2.20   |   |

Remove -NP Suffix for connector pre-filled with PENETROX™ oxide inhibitor